

**BASIC INFO**

START TIME 12-JUL-2011 0100LT (2200UTC)  
 SCHED LAU TIME 0115LT CASE III DEP LOC N2638E5644  
 EXP REC TIME 0300LT CASE III REC LOC N2609E5656  
 HOME FREQ 305AM TCN 71X ILS 11 LINK4 336  
 WX CLR SR 0522LT SS 1913LT TEMP 25C QNH 2993 WIND 331 5KTS SEA 1 NGT VSBY

**FLIGHT**

FLT	CS	T#	A/A	DLNK	LASER	WPN
Hawk 1	Hawk 1-1	211	11X	HK11	N/A	9X,84H,WT,120C,DL,AFLIR,WT,84H,9X
	Hawk 1-2	212	12X	HK12	N/A	9X,84H,WT,120C,DL,AFLIR,WT,84H,9X
	Hawk 1-3	213	13X	HK13	N/A	9X,84H,WT,120C,DL,AFLIR,WT,84H,9X
	Hawk 1-4	214	14X	HK14	N/A	9X,84H,WT,120C,DL,AFLIR,WT,84H,9X
Hawk 2	Hawk 2-1	215	21X	HK21	N/A	9X,2*82J,WT,120C,CT,AFLIR,88,2*82J,9X
	Hawk 2-2	216	22X	HK22	N/A	9X,2*82J,WT,120C,CT,AFLIR,88,2*82J,9X
	Hawk 2-3	217	23X	HK23	N/A	9X,2*82J,WT,120C,CT,AFLIR,88,2*82J,9X
	Hawk 2-4	218	24X	HK24	N/A	9X,2*82J,WT,120C,CT,AFLIR,88,2*82J,9X

**PACKAGE**

FLT	AC	NO.	TASK
Hawk 1	F/A-18C	4	Pinpoint Strike
Hawk 2	F/A-18C	4	DEAD
Viper 1	F-16C	2	DEAD
Viper 2	F-16C	2	DEAD

**SUPPORT**

FLT	AC	TASK	A/A	CH	RMRK
Magic	E-2D	AWACS		2	Strike
Darkstar	E-3A	AWACS		4	Darkstar
Texaco 1	KC-135M	Refuel	53X	10	FL250
Arco 1	KC-130	Refuel	54X	11	FL210
Shell 1	S-3B	Refuel	51X	8	Standby
Shell 2	S-3B	Refuel	52X	9	Standby

**FLIGHT PLAN (HAWK 1, 2)**

WP	NAME	TIME	SPEED	ALT	ACT
0	LAU	0115L			Launch
1	RV	0120L	0.60M	25K	Regroup
2	DRY	0130L	0.85M	30K	Check In
3	ING	0140L	0.85M	35K	Ingress
4	IP	0145L	0.90M	35K	Attack
5	ROCK				
6	KER				
7	EGR	0230L	0.85M	35K	Egress
8	WET	0242L	0.80M	30K	Feet Wet
9	REC	0250L	0.40M	1K	Recovery

**RADIO COMMS**

CH	CODE	AGCY	FREQ
1	Green 1	Marshal	305.00
2	Red 1	Strike	264.00
3	Red 2	Wizard	265.00
4	Red 3	Darkstar	256.00
5	Yellow 1	Hawk 1	254.00
6	Yellow 2	Hawk 2	250.00
7	Yellow 3	Hornet	270.00
8	Violet 1	Shell 1	257.00
9	Violet 2	Shell 2	255.00
10	Violet 3	Texaco 1	262.00
11	Violet 4	Arco 1	259.00
12	Orange 1	Devil	268.00
13	Orange 2	Chevy	269.00
14	Orange 3	Check	260.00
15	Blue 1	Raven	263.00
16	Blue 2	Dodge	261.00
17	Blue 3	Ford	267.00
18	Indigo 1	Trek	251.00
19	Indigo 2	Viper	253.00
20	Indigo 3	Colt	266.00

**ALT AFLD**

AFLD	FREQ	COOR
Fujairah	124.350	N26°11' E56°14'
Khasab	118.150	N25°39' E57°48'
B.Abbas	118.150	N25°39' E57°48'

**HAWK 1 TGT INFO**

NO	TYPE	COOR (PRES)	ELEV (FT)	RMKS	PRI	CMMT
1	Radar	N30°33'17.96" E56°21'23.00"	10460ft	EW Radar	PRI	Static
2	Radar	N30°33'38.12" E57°09'28.58"	12230ft	EW Radar	PRI	Static
3	Radar	N30°57'09.80" E56°58'28.00"	7450 ft	SA-5 TR	PRI	Mobile
4	Radar	N30°57'09.75" E56°58'34.64"	7445 ft	SA-5 SR	PRI	Mobile
5	Tower	N30°26'29.55" E56°56'59.00"	7460ft	North Tower	SEC	Static
6	Tower	N30°16'22.75" E57°01'58.54"	5760ft	South Tower	SEC	Static

**HAWK 2 TGT INFO**

NO	TYPE	COOR (PRES)	ELEV (FT)	RMKS	PRI	CMMT
1	Vehicle	N30°16'45.87" E56°55'13.80"	5736ft	CMD CTR	PRI	Mobile
2	Radar	N30°16'42.94" E56°55'13.60"	5736ft	BB SR	PRI	Mobile
3	Radar	N30°16'44.70" E56°55'10.87"	5736ft	CS SR	PRI	Mobile
4	Radar	N30°16'44.18" E56°55'16.55"	5736ft	FL TR	PRI	Mobile
5	Launcher	N30°16'42.12" E56°55'20.46"	5736ft	S-300 TEL	PRI	Mobile
6	Launcher	N30°16'41.48" E56°55'23.67"	5736ft	S-300 TEL	PRI	Mobile
7	Launcher	N30°16'40.81" E56°55'26.40"	5736ft	S-300 TEL	PRI	Mobile
8	Launcher	N30°16'40.11" E56°55'29.64"	5736ft	S-300 TEL	PRI	Mobile
9	Launcher	N30°16'39.40" E56°55'33.00"	5736ft	S-300 TEL	PRI	Mobile
10	Launcher	N30°16'38.57" E56°55'36.44"	5736ft	S-300 TEL	PRI	Mobile

**NOTE**

1. SA-5 radars are mobile, use datalink to verify or adjust for terminal attack
2. SA-10 targets are mobile but with little probability to be re-allocated
2. If SA-6 sites are active, attack the SA-10 site from west and egress south

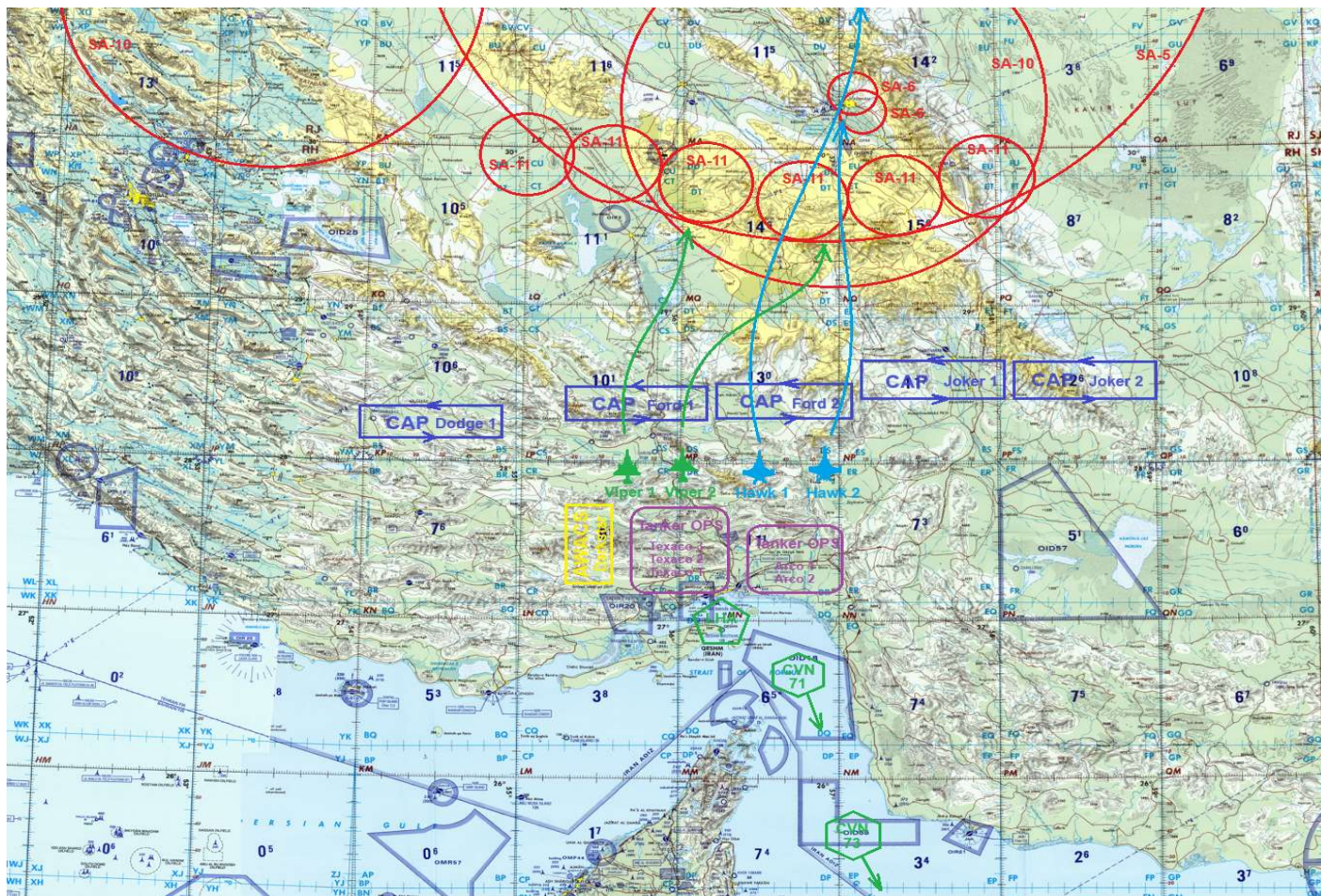




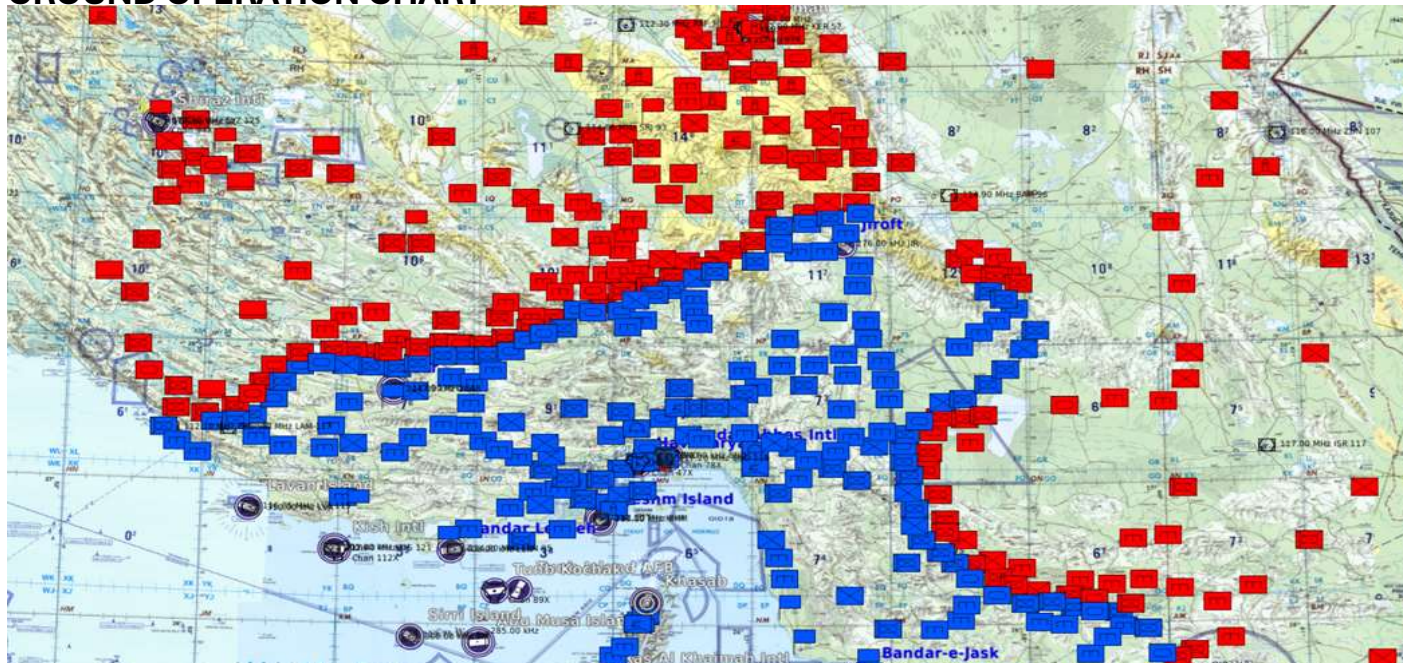




## AIR OPERATION CHART



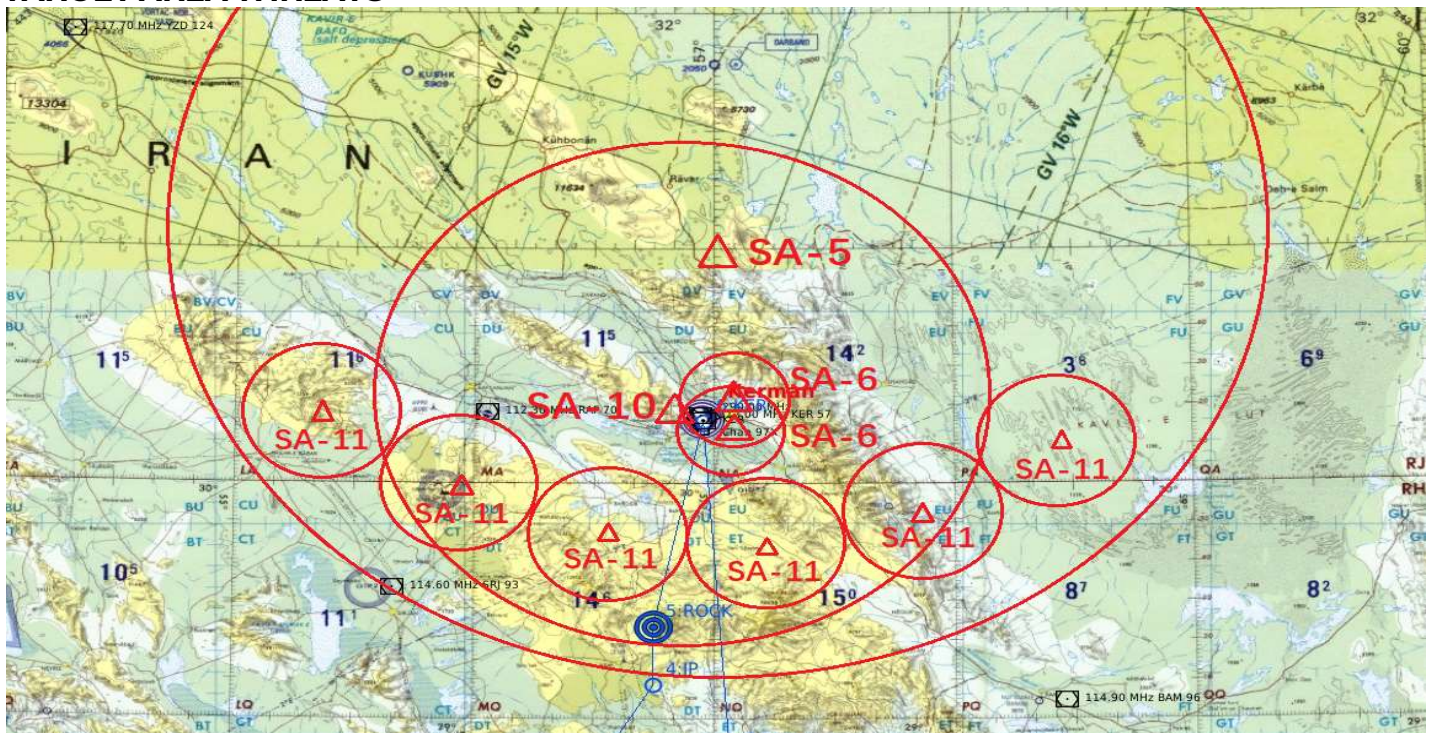
## GROUND OPERATION CHART



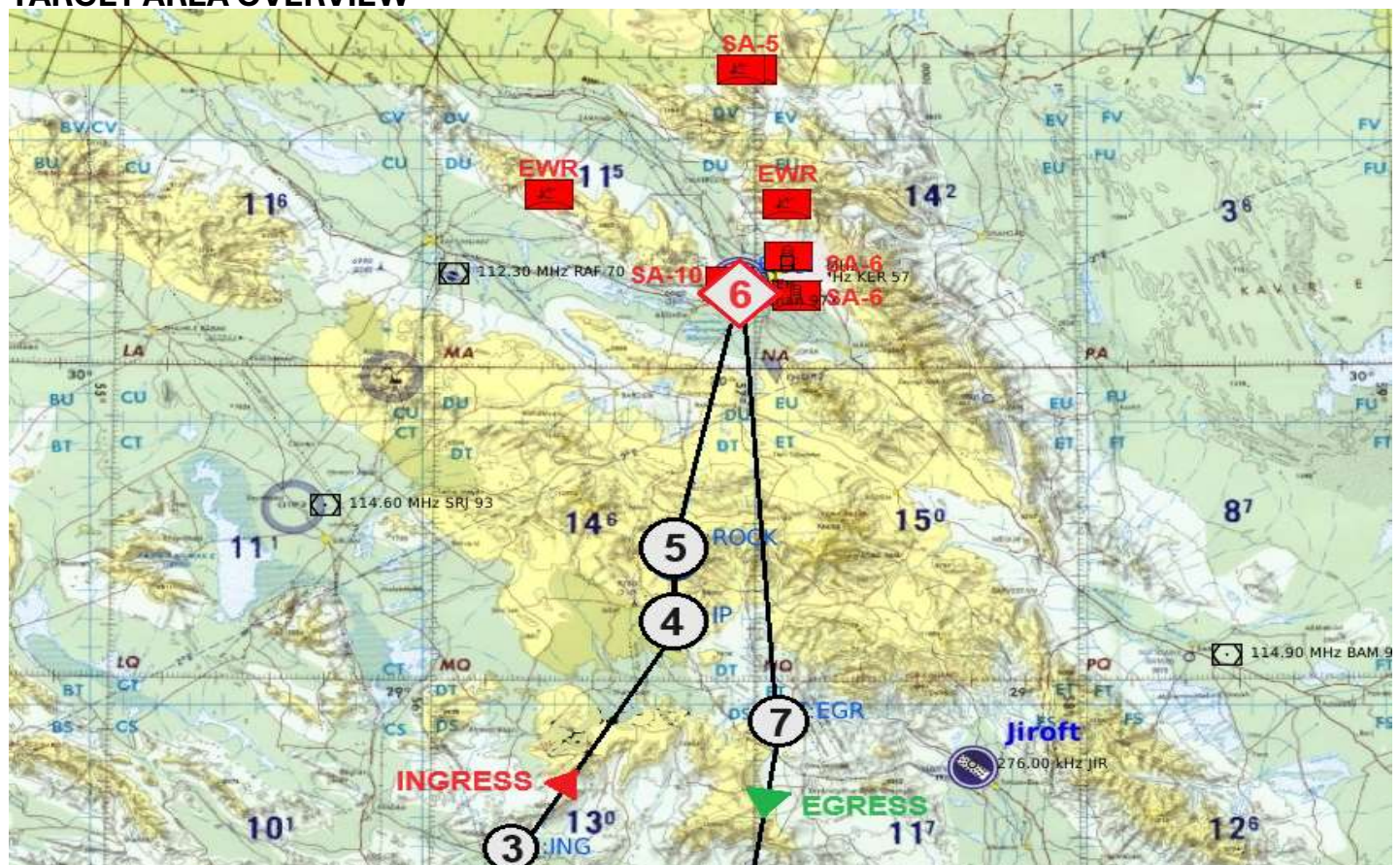




## TARGET AREA THREATS



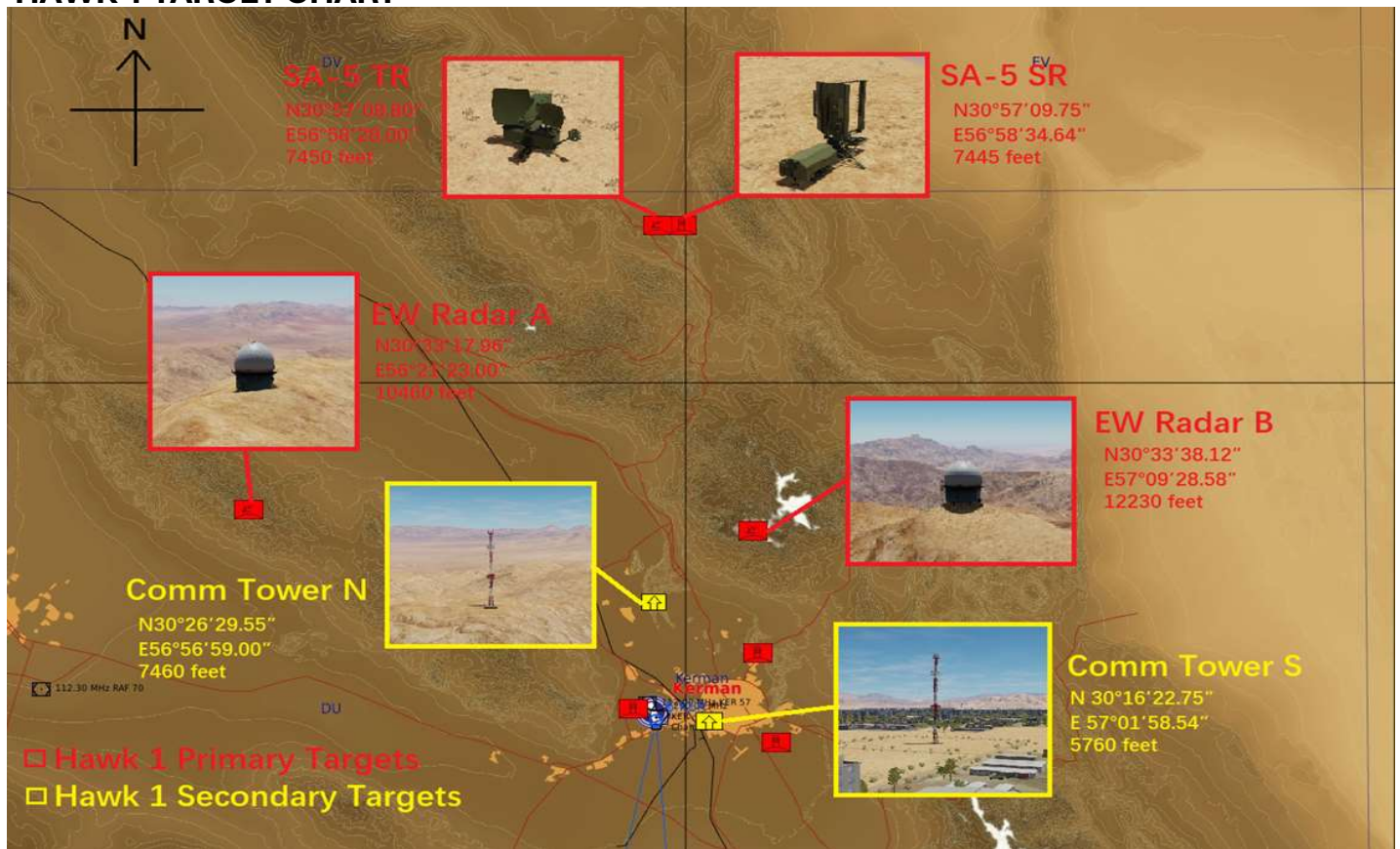
## TARGET AREA OVERVIEW



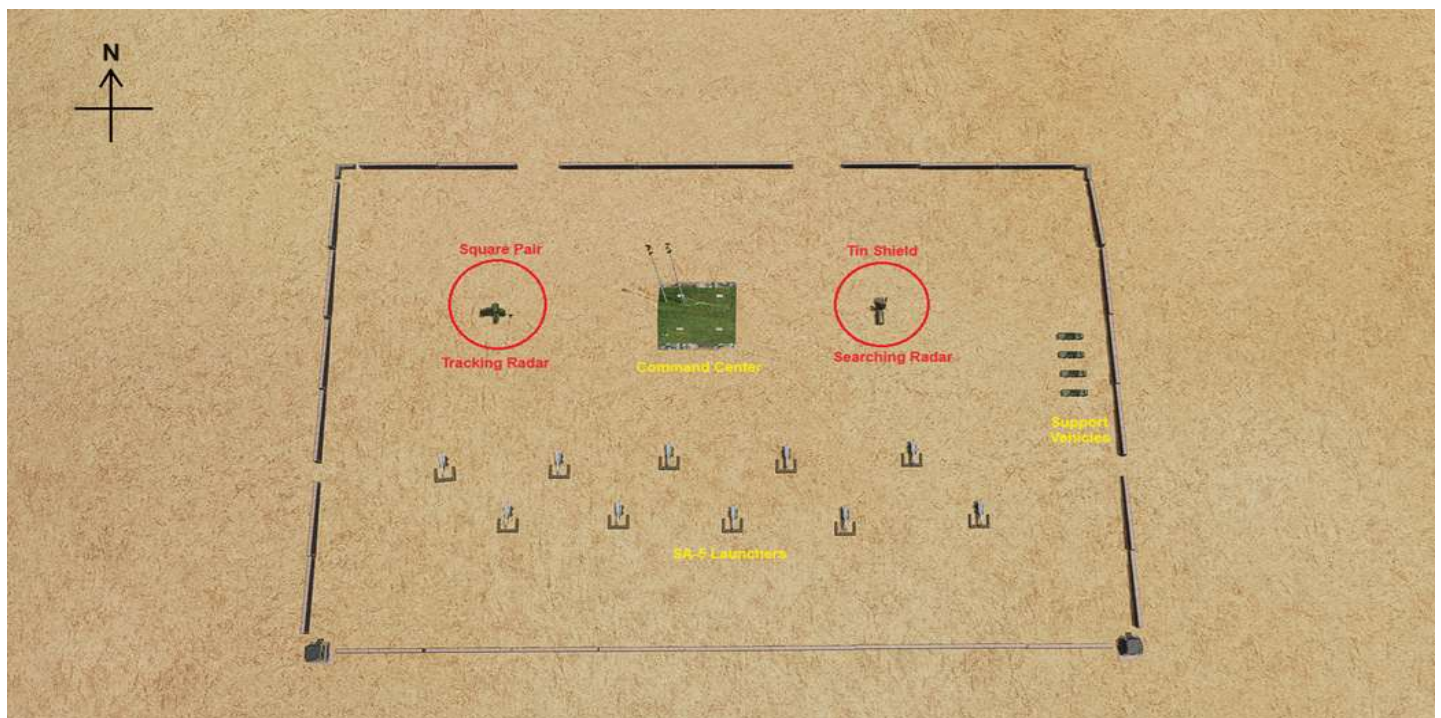




## HAWK 1 TARGET CHART



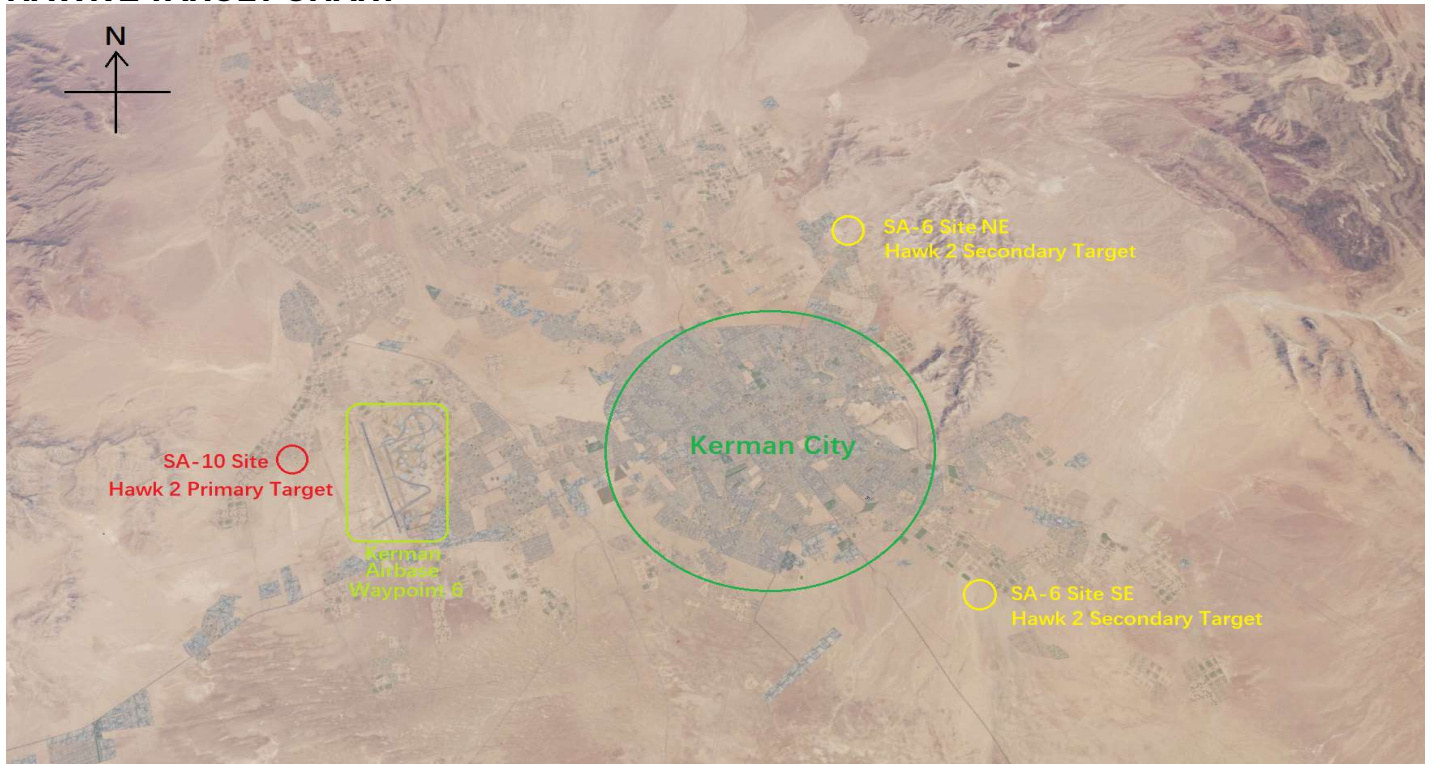
## SA-5 SITE LAYOUT







## HAWK 2 TARGET CHART



## SA-10 SITE LAYOUT

